

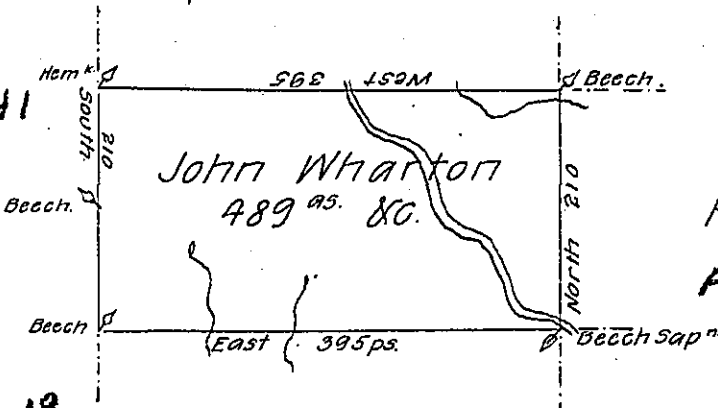
C-8-237

LIMJI MHOW

A-2-115

A-8-135

C-8-241



Peter Baynton
A-22-138

C-8-219

Thos Moore

N-273

C-8-193

C-152-8

Draft of a tract of land called ——— Situate on the
 waters of Wisobusing Creek Joining land surveyed for
 Matthew Irwin & others in the Co (obl.) of Luzerne
 containing four hundred & eighty nine acres & allowance
 (obl.) six P Cent for roads &c. Surveyed for John Wharton
 the 21st da (obl.) Nov^r 1789 in pursuance of a warrant
 dated the 15th day of April (obl.)

by Wm. Gray (obl.)

To Daniel Brodhead Esq^r

Surv^r. Gen^l

IN TESTIMONY that the above is a copy of the original remaining on file in
 the Department of Internal Affairs of Pennsylvania, made
 conformably to an Act of Assembly approved the 16th day of
 February 1833, I have hereunto set my hand and caused
 the Seal of said Department to be affixed at Harrisburg,
 this third day of May 1907.

Isaac P. Brown
 Secretary of Internal Affairs.